

BOARD OF DIRECTORS

OFFICERS

President
Julia Schaffner
St. Louis Arc
Maplewood UMC

Vice President
Facundo Oyenard
Azteca Insurance LLC

Treasurer
Howard Goldberg
Royal Banks of Missouri

Secretary
Stacey Kelley
Kelley Energy Management
Crossroads Presbyterian

MEMBERS

Kierstin Covert
Vibrant You

Josiah Green
Crossroads Presbyterian

Brandi Herndon-Miller
Law Offices of
Brandi Herndon-Miller

Bonita Jamison, Ed.D
MRH School District

Ralph Posley
Word of God Christian
Church

Aaron Telle
Telle Tire & Auto Centers

HOUSE PARENTS

Sam & Katie Blue

STAFF & SUPPORT

Vince Estrada
Director of Student Services
MRH School District

Sandra Richason
Development Coordinator



FALL 2021

WELCOME TO OUR NEW HOUSE PARENTS SAM & KATIE

Joe's Place has the remarkable experience of coming full-circle this year by welcoming alumnus Sam and wife Katie Blue as house parents for the 21 / 22 school year! Sam is a 2015 graduate from Joe's Place and MRH High School. Since graduation, he has retained close ties with Joe's Place and the larger MRH community as a gifted musician and music teacher. Those who attended the Joe's Place virtual event in May were touched by Sam's first-hand account of being a resident of Joe's Place and were treated to a special piano interlude. Katie has a social work degree and strong social service background. Although she did not grow up in the area, Katie says she already feels a strong sense of connection to the community. Sam and Katie are excited to join the Joe's Place community in this new role. Their primary goal right now is creating a sense of family connection and belonging in the home to help the residents flourish and prepare for their next phase of life. Sam and Katie want to ensure the residents have the love and support they need to succeed.



Sam and Katie Blue

THANK YOU TO OUR CORPORATE, FAITH-BASED, AND FOUNDATION SUPPORTERS

The Joe's Place Board and family thank the following corporations, churches, and foundations for their ongoing generosity. Their support- especially during the pandemic - helps our mission and programs thrive. Our organization would not be in existence without their support.

Clifford Willard Gaylord Foundation
Covert Foundation
Dana Brown Charitable Trust
First Church of Christ, Scientist
- Brentwood
First Unitarian Church of St. Louis
Florence Heiman Charitable Trust
International Charitable Foundation
Lesley McIntire Charitable Fund

Margaret Mudd Fletcher
Charitable Foundation
MapleGood
Maplewood United Methodist Church
MRH Teachers and Staff
Saigh Foundation
St. Louis Community Foundation
Tapped
Telle Tire and Auto Centers

Clifford Willard Gaylord Foundation



CHRISTIAN SCIENCE



MAPLEWOOD
United Methodist Church



theSAIGHfoundation



LETTER FROM BOARD PRESIDENT

I remember learning about the initial concept of Joe's Place in 2005 and being incredibly excited by living in a school district and community that was willing to identify and act upon the unmet need of students experiencing housing insecurities. When the unmet needs of Joe's Place alumni were recognized and defined, the program again responded in 2019 by expanding to include a case manager and dedicated resources for graduates, essentially broadening their safety net and sense of belonging. Now into its 15th year of operation, Joe's Place continues to be an innovative and responsive program and stays true to its roots of working to equal the playing field. Equity is at the center of who we are.

It has truly been an honor and privilege to serve on the Board of Directors since 2017 and as Board President since 2020. As a Board representative from Maplewood United Methodist Church the opportunity has been a gift. I am so grateful to the Joe's Place staff with whom I have worked; House Parents - Sam & Katie Blue and Matt Bauersachs & Amber Compton-Bauersachs; Case Manager - Rachel Mapp; Development Contractor (and master of so much knowledge) - Sandra Richason; and Director of Student Services - Vince Estrada. Your dedication motivates me to work harder and advocate louder on behalf of others. I daily witness altruism from fellow board members, volunteers, and the larger community by their unselfish giving of time and resources, and it fills me with such hope for a brighter future. However, the greatest gift of my tenure has been getting to know residents and alumni of Joe's Place and hearing their first-hand accounts of the impact of the program. Your truth grounds me to the priorities of unconditional love and acceptance of all those we call family.



With sincere gratitude and thanks,

Julia Schaffner

FUNDRAISER UPDATES

Cheese, Chocolate, & Wine!



This year was another year without our in-person events like the Maplewood Shuffle and Party for Joe's Place events due to pandemic. To help offset donations that otherwise would have been received at those events, the Joe's Place Board and a group of MRH parents got together this past May to organize our first virtual event - Cheese, Chocolate, & Wine! A Virtual Tasting Experience. At first, this was a challenging task. However, with the help of local supporters like Brian Pelletier, owner of Kakao Chocolate and Tale to Table, we were able to pull it off and raise the necessary funds to replace a 20-year-old HVAC system for the house. Attendees received delicious cheese and chocolate paired with wine selections all while raising more than \$6,800. Thank you to Brian Pelletier of Kakao, Chateau Maplewood, Crossroads Presbyterian, Sam and Katie Blue, and MRH community members Cindy & Ray Crader, Stacy & Dan Dick, Roy Gladney, Heidi & Brian Matz, Heath Moylan, and Andrea & Stephen Sukanek. We also extend our sincerest gratitude to the following local businesses and individuals that provided raffle prizes for our event: Telle Tire, Garden Heights Nursery, European Wax Center, Bee Naturals, Mr. Wizard's Frozen Custard &

Yogurt, Boardwalk Waffles & Ice Cream, Sweet Tooth Bakery, Massage Luxe, Andy's Frozen Custard, The Heights, Brian McBride, and Stacy & Dan Dick. Lastly, we especially thank all the attendees for making our virtual event so special.



Joe's Place at Tapped

Thank you to everyone that ordered dinner or dined in during our Charity of the Week event at Tapped this past September. Your participation helped make a difference. Special thank you to Tapped owners Lindsay and Ryan Reel and staff member Natalie Gaviria. We sincerely appreciate all that you do for Joe's Place and the local community.

JP HOUSE HAS A NEW DRYER

Thank you to First Unitarian Church's First Church Community Fund (FCCF) members, congregants, and Committee Chair Rosemary Lawton. The FCCF's support this year helped purchase a new dryer that was desperately needed for the house. (Special thank you to Slyman Bros Appliances for making appliance shopping so easy.) "Thank you so much for the new dryer! It works wonderfully and the gentlemen who installed it were so nice!" says Katie and Sam Blue.



MAKE A DIFFERENCE THIS HOLIDAY SEASON

This holiday season, we invite you to share in the spirit of giving for Joe's Place. Without your support, it would be challenging for the young men in our program to graduate high school or achieve post-secondary education and career goals. Instead, they would continue to be homeless, at risk for abuse and malnutrition, experience more chronic health problems, and remain in the cycle of poverty with little hope for a positive future. However, because of programs like Joe's Place, they have a safe place to live with access to healthy food, clean clothes, counselors, tutors, and positive role models necessary to graduate from MRH and succeed in life. That's why the support of our programs is critical so these young men can achieve their education and career goals and end the cycle of poverty in their lives. So, this holiday season, please consider one of the many ways to make a difference. Any gift you can make is greatly appreciated. Thank you!

Make a Contribution

Make a donation using the envelope provided with this newsletter, or visit our website at www.joesplacestl.org. Donations received during the holidays fund our programs that provide food, shelter, clothing, tutoring, counseling, and more for our program participants.

Fulfill a Holiday Wish

Just like you and your family, our residents and alumni have holiday wishes too. You may give a gift this holiday season to one of the young men in our program in one of two ways.

1. Select a gift from their wish list on Amazon at <https://a.co/9GEbPen>.
2. Make arrangements to donate a Target, Walmart, Aldi, or Chick-fil-A gift card by sending an email to joesplacestl@gmail.com.

Signup to be a Monthly Donor

Be a part of the growing list of families in our area that make a monthly donation to support our programs. A monthly gift as small as \$10, \$15, \$20 or more, helps cover costs for groceries for the family or assists one of our graduates struggling during his first year at college. To sign up, visit our website at www.joesplacestl.org

Donate a Dinner for the Family

Prepare meals for the resident family by scheduling a cooking session at your convenience or order ready-made dishes by pre-ordering or stopping by at Time for Dinner - 8506 Manchester Road. During a cooking session, you may assemble a few dishes for Joe's Place and a few for your own. The resident family would appreciate beef, chicken, pork, salmon, or tilapia dishes made to store in the freezer. Visit www.timefordinner.com for more information.

GIVING TUESDAY

Participate in Giving Tuesday

This **Tuesday, November 30**, is Giving Tuesday - our united day of celebrating the act of giving! You can support Joe's Place with a generous donation the day of by visiting www.joesplacestl.org and clicking the Donate with PayPal button.

JOE'S PLACE IS HIRING!

Case Manager

Joe's Place has an immediate opening for a Case Manager to work with resident seniors and program alumni. This contracted position averages about 10 hours per week.

Respite Care Worker

Joe's Place is in need of a Respite Care worker on Wednesday nights 6:00pm - 9:00pm to provide nurturing and guidance for up to four high school students.

For more information and to apply, please visit MRH School District Employment Opportunities page at <https://www.mrhschools.net/Page/38>.



P.O. Box 434057
Maplewood, MO 63143
314-446-1776
www.joesplacestl.org
Email: joesplacestl@gmail.com

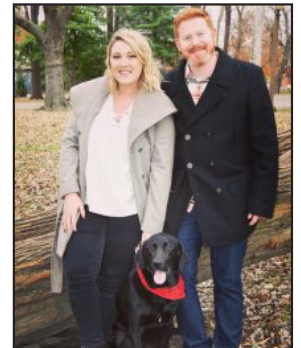
Joe's Place offers homeless teenage boys in the Maplewood Richmond Heights School District a caring home environment that supports them for high school graduation, self-sufficiency, and positive transitions into their adult lives.

Connect with us:    

JOESPLACESTL.ORG

GOODBYE TO HOUSE PARENTS MATT & AMBER

It is with heavy hearts we said goodbye to Joe's Place house parents, Matt Bauersachs and Amber Compton - Bauersachs. Matt and Amber joined the Joe's Place family in the summer of 2019, and from the start, they demonstrated an unwavering commitment to the program's mission. No example demonstrates this fact more clearly than when they embraced the spring 2020 lock-down and virtual learning last school year. Their tenure will undoubtedly be etched in the history books as one of Joe's Place's most challenging times, yet they embraced the challenges of the pandemic with unselfish resolve to ensure a continued stable and loving home for the residents. Please help us in thanking them for their service and congratulating them on their expanding family as they welcomed their baby girl at the end of September! Matt and Amber, we are truly grateful for your service and appreciate that you have chosen to remain in the area and continue your association with Joe's Place!



FAREWELL TO RACHEL MAPP



Our case manager, Rachel Mapp, stepped down in late October. Rachel was hired as the first case manager of Joe's Place in December 2019. This position was created to allow the organization to fully live into its mission of supporting residents after graduation for self-sufficiency and positive transitions into their adult lives. Rachel and her husband, Jeremy Mapp, previously served as the second set of house parents at Joe's Place from 2014 - 2018. They both retained connections after leaving. When the case manager position opened, Rachel was excited to rejoin the organization as an employee and felt the position to be a natural extension of her previous role. Rachel's history and knowledge have been a tremendous asset in establishing the case manager position. We greatly appreciate her dedication to ensuring our graduates continue upward trajectories, have a place to turn when a crisis hits, and the guidance, referral, and connections that all young adults require. Please help us in thanking Rachel for her many years of service and in wishing the Mapp family well as they embark on new endeavors.